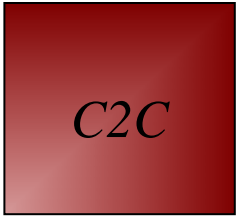


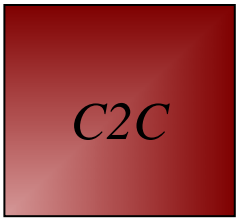
**Value Added Engineering**

# Company Profile



Value Added Engineering

C2C Engineering Private Limited (formerly C2C Engineering) provides Design & Detailed Engineering Services in Process, Civil, Structural, Mechanical, Piping, HVAC, Emergency Management, Electrical & Instrumentation, Procurement Assistance, Construction Supervision and Project Management Services as well undertakes LSTK Contracts



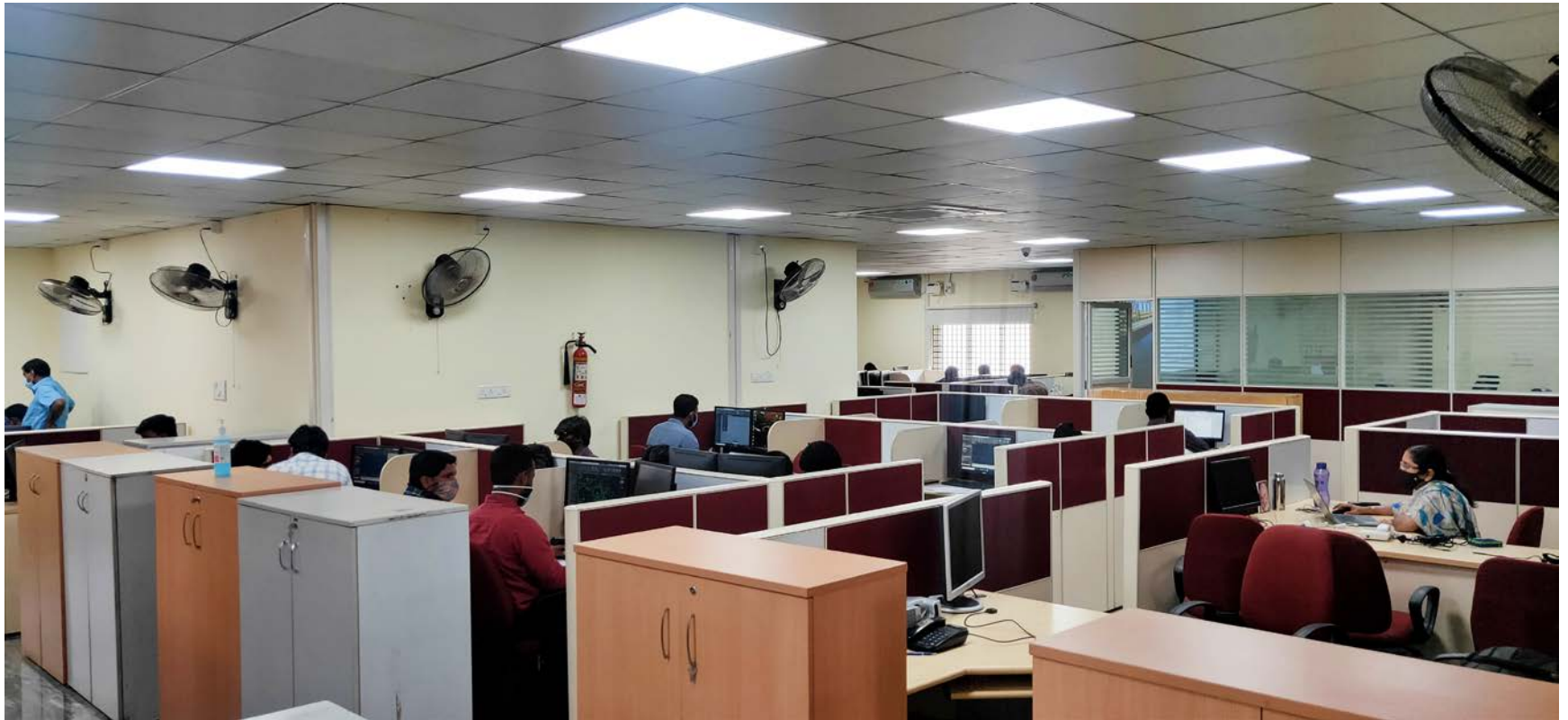
Value Added Engineering

- **C2C Engineering** commenced its operations on 01.01.2006.
- **C2C** operates out of Chennai and has a **60-seater** office with one conference hall.
- The management team of **C2C** consisting of the Chief Executive, Head-Engineering, Head-Operations & Head-Projects bring with them their experience in having worked in large multidisciplinary engineering consulting firms where they have worked in Paints, Petrochemicals, Oil & Gas, Pharmaceuticals (Bulk Drugs & Formulations), Agro Chemicals & Engineering Projects.

*C2C*

## View of Office – 1 of 2

Value Added Engineering

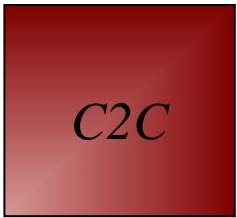


C2C

## View of Office – 2 of 2

Value Added Engineering

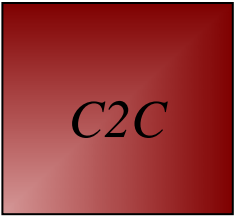




Value Added Engineering

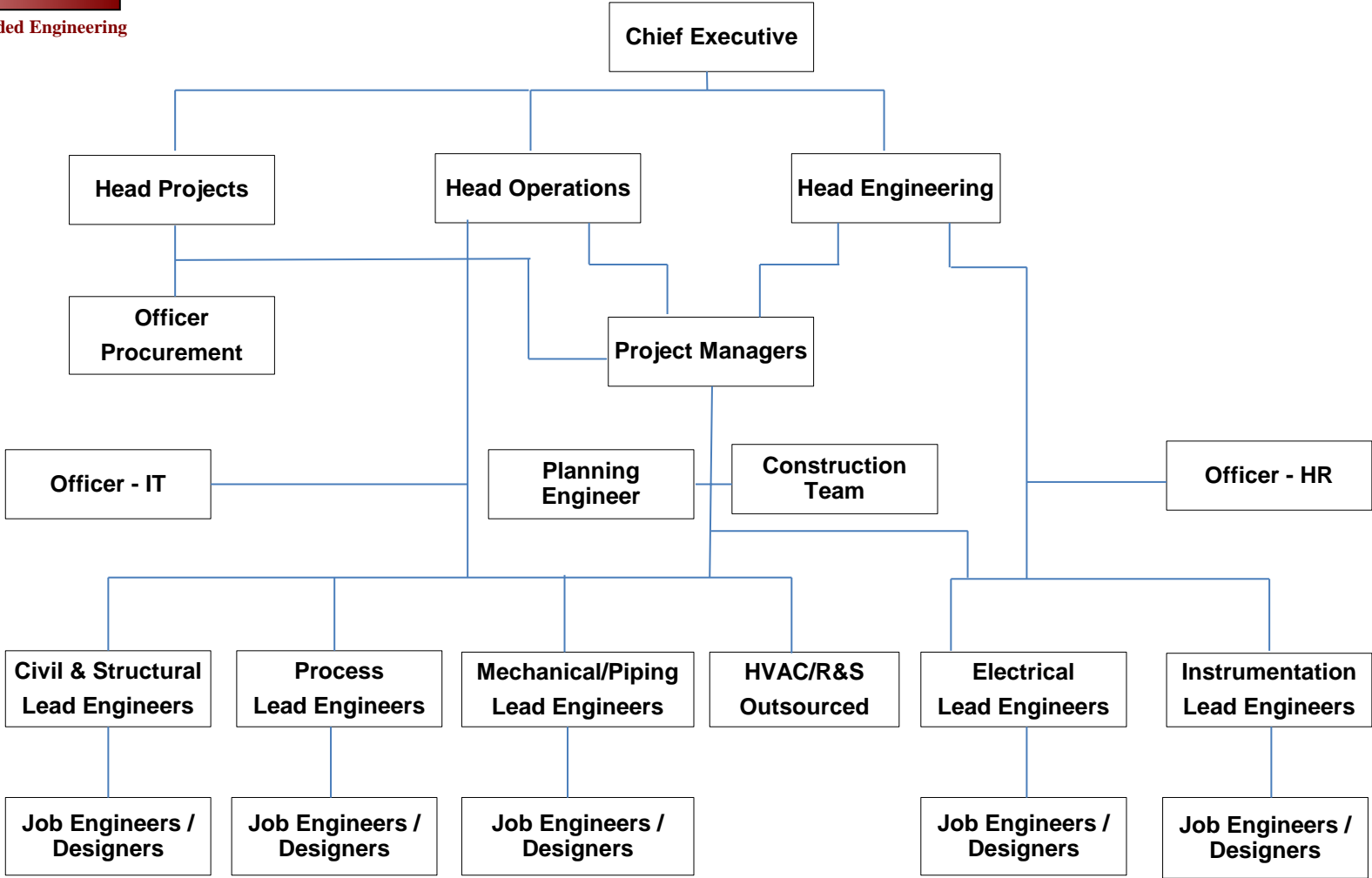
# Manpower Resources

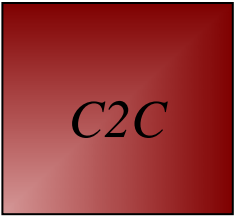
S No	Discipline	Engineers	Designers	Total
1	Civil & Structural	4	6	10
2	Process	3	2	05
3	Mechanical / Piping	5	17	22
4	Electrical	3	4	07
5	Instrumentation	2	1	03
6	Project Management	2	-	02
7	Overall Management	4	-	04
8	Procurement	1	-	01
9	Construction	12	-	12
Total		36	30	66
Administration		8	-	08
Total Incl Administration		44	30	74



Value Added Engineering

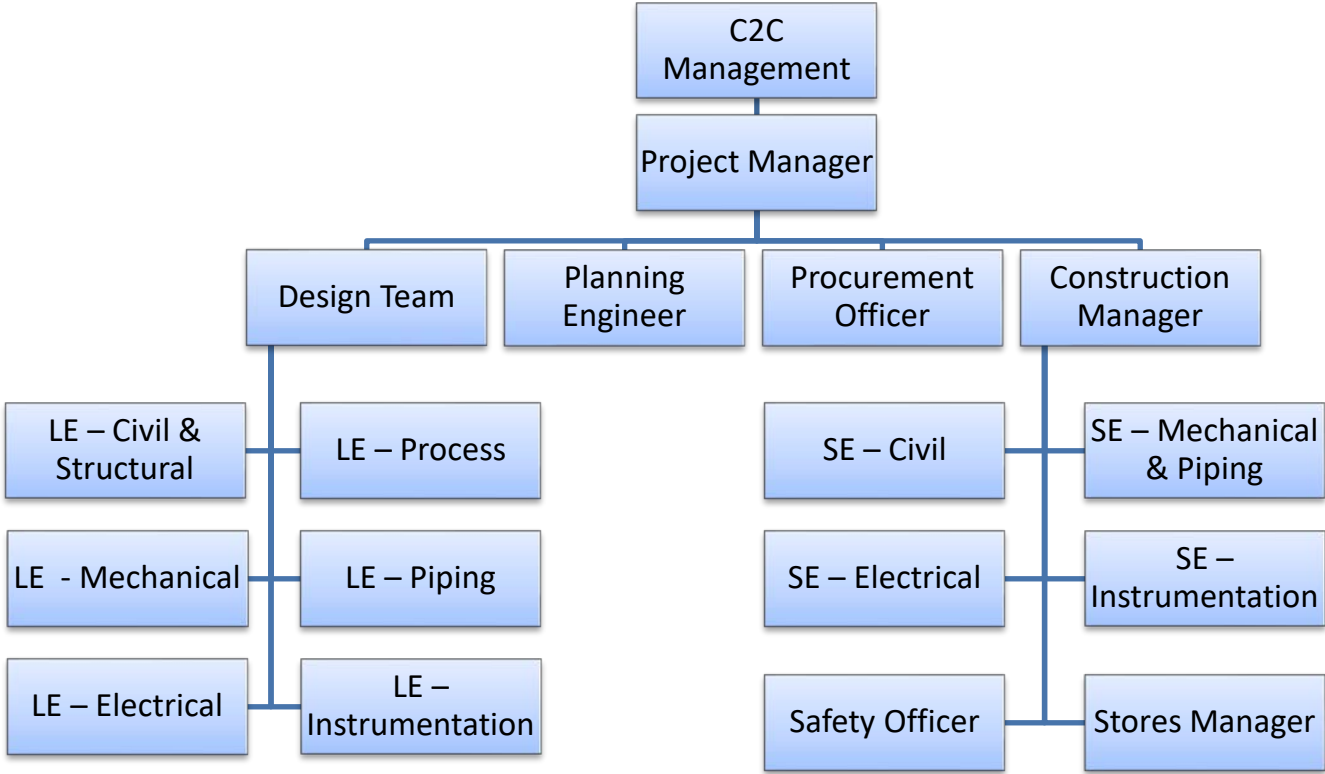
# Organogram



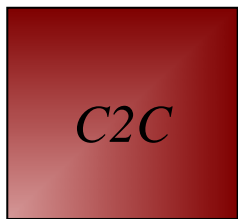


Value Added Engineering

# Typical Project Organogram







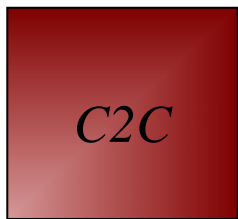
Value Added Engineering

# Pharmaceuticals Sector - 1 of 2

No	Project	Client	Year	Scope of Services
1	Formulations	Granules India, Hyderabad	2005-06	P & PMC
2	Solvent Recovery	Granules India, Hyderabad	2005-06	P & PMC
3	Formulations Revamp	Phaarmasia, Hyderabad	2006-07	C,S,P,E,HVAC,PMC
4	Greenfield Bulk Drug	Natco Organics, Chennai	2008-09	S,PR,M,P,E ,I, PA
5	Formulations	Himalaya Drug, Bangalore	2007-08	P & PMC
6	Formulations	Natco Pharma, Hyderabad	2007-08	P
7	API Facility – H Block	Dr.Reddy’s, Bollaram	2009-10	C,S,PR,M,HVAC,P,E,I
8	API Facility – O Block	Dr.Reddy’s, Mriyalaguda	2009-10	C,S,PR,M,HVAC,P,E,I
9	API Facility	Natco Pharma, Hyderabad	2010-11	PR,P
10	Formulations - Expansion	Granules India, Hyderabad	2011-12	P & PMC

**C-Civil, S-Structural, PR-Process, M-Mechanical, P-Piping, E-Electrical, I-Instrumentation, FFS-Fire Fighting System, PA-Procurement Assistance, CS-Construction Supervision, PM-Project Management, EPCMV-Engineering, Procurement, Construction, Project Management & Validation Services., BE-Basic Engineering ,CE-Cost Estimate**

**Rows highlighted in green indicates GREENFIELD PROJECTS**



Value Added Engineering

## Pharmaceuticals Sector – 2 of 2

No	Project	Client	Year	Scope of Services
11	API Facility – P & NBL Block	Dr.Reddy's, Mriyalaguda	2012-13	EPMCV
12	API Facility – R Block	Dr.Reddy's, Mriyalguda	2012-13	ECV
13	Formulations	Hetero Drugs, Hyderabad	2012-13	P
14	Formulations	Aurobindo Health Care, Jadcherla	2013-14	P,E
15	Formulations	Aurobindo Pharma, Parwada	2014-15	P,E
16	API Facility – R Block Exp	Dr.Reddy's, Mriyalguda	2015-16	C,S,PR,M,HVAC,P,E,I,FFS
17	API Facility – Utilities & Offsites	MSN Lifesciences, Hyderabad	2016-17	PR,P,CS
18	API Facility – Greenfield	MSN Pharamachem Unit II, Hyderabad	2017-18	C,S,PR,M,HVAC,P,E,I,FFS,CS
19	API Facility – Brownfield	Maitri Drugs	2019-20	C,S,PR,M,HVAC,P,E,I,FFS

# Paints Sector – 1 of 3

No	Project	Client	Year	Scope of Services
1	Cap. Expn.15 to 22 ML	ICI India, Hyderabad	2006-07	C,S,PR,P,E ,I
2	Cap. Expn. 25 to 37 ML	ICI India, Mumbai	2007-08	C,S,PR,P,E, I
3	Cap. Expn. 50 to100 ML	Asian Paints, Sriperumbudur	2007-08	PR,M,P,E, I,CS
4	FP Warehouse	ICI India, Hyderabad	2008-09	C,S,FFS, E
5	Cap. Expn. 37 to 51 ML	ICI India, Mumbai	2007-08	C,S,PR, M,P,E,I
6	Polymer Expansion	Asian Paints, Sriperumbudur	2008-09	PR,M,P,E, I
7	Primer Expansion	Asian PPG, Sriperumbudur	2009-10	C,S,PR,M,P,E, I,PA,PM
8	Intermediate & SRP Exp	Asian PPG, Sriperumbudur	2010-11	C,S,PR,M,P,E, I,PA,PM
9	Short Term Expansion	Asian PPG, Sriperumbudur	2011-12	C,S,PR,M,P,E, I,PA,PM
10	Cap. Expn. 150 to 225 ML	Asian Paints, Rohtak	2011-12	PR,M,P,E, I,CS

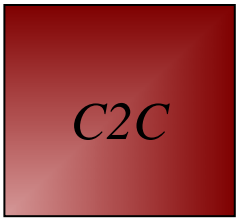
# Paints Sector – 2 of 3

Value Added Engineering

No	Project	Client	Year	Scope of Services
11	Expansion	Valspar, Bangalore	2012-13	BE & CE
12	Greenfield Paints Facility	Shalimar Paints, Gummidipoondi	2012-15	PR,P,E,I
13	MOB Lab	Valspar, Bangalore	2013-14	C,S,M,P,E,I,FFS,HVAC& Erection Works
14	Greenfield Resin	PPG Asian, Dahej	2013-14	BE & CE
15	As Built Drawings	Asian Paints – Patancheru, Kasna, Ankleshwar & Sriperumbudur	2013-14	PR,M,P,E
16	Revamp & Expansion	PPG Asian, Moraiya	2013-14	BE,CE & C&S
17	Installation of Robot	PPG Asian, Sriperumbudur	2014-15	C,S,M,P,E& Erection Works
18	Clear Coat Expansion	PPG Asian, Sriperumbudur	2014-15	S,M,P,E,I & Erection Works
19	Industrial Coatings Cell	PPG Asian, Sriperumbudur	2015-16	BE & CE
20	Ystral Inline Dispenser	Asian Paints, Rohtak	2015-16	PR,M,P,E,I,S

# Paints Sector – 3 of 3

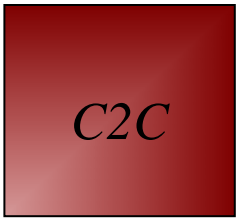
No	Project	Client	Year	Scope of Services
21	SPICE	PPG Asian, Sriperumbudur	2016-17	C,S,PR,M,P,E,I,PA,PM
22	Emulsion Tank Farm Expn	Asian Paints, Khandala	2016-17	PR,M,P,E,I
23	Paint Block	PPG Asian, Dahej	2019-20	BE & CE
24	ATC Lab Expansion & POS Expansion	Valspar India	2020-21	C,S,PR,M,P,E,I,FFS



Value Added Engineering

# Chemicals, Petrochemicals and Oil & Gas Sector – 1 of 2

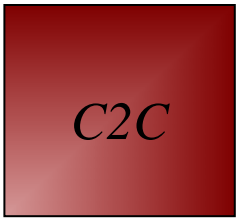
S No	Project	Client	Year	Scope of Services
1	Rubber Chemicals	Lanxess, Madurai	2006-07	C,S,P,E & I
2	Cap. Expn.- Lube Oil	Castrol, Patalganga	2007-08	C,S,M,P,E & I
3	Greenfield Agrochemical	Deccan Chemicals, Tuni	2008-10	C,S,PR,M,P,E,I,CS
4	Specialty Chemicals	Lanxess, Madurai	2008-09	C,S,M,P,E & I
5	Fuel Hydrant System for Hambantota Airport	Ceylon Petroleum Corporation	2011-12	P,E&I
6	Agrochemicals	Deccan Chemicals, Tuni	2013-14	BE & CE
7	Buildings Chemicals	BASF- HIRA N, Naidupet	2013-14	PR,C,S,M,P,E,I & PMC
8	Buildings Chemicals	BASF- HIRA K, Kharagpur	2014-15	PR,C,S,M,P,E,I & PMC
9	Buildings Chemicals	BASF- HIRA J, Bangladesh	2014-15	BE & CE
10	Agrochemicals - CPTAP	Deccan Chemicals, Goa	2017-18	PR,C,S,M,P,E,I,FFS



Value Added Engineering

# Chemicals, Petrochemicals and Oil & Gas Sector – 2 of 2

S No	Project	Client	Year	Scope of Services
10	Agrochemicals – MPP	Tagros Chemicals, Cuddalore	2017-18	PR,C,S,M,P,E,I,FFS
11	Agrochemicals – DGIN-02	Deccan Chemicals, Goa	2018-19	PR,C,S,M,P,E,I,FFS
12	Agrochemicals – Launch Plant	Deccan Chemicals, Goa	2018-19	PR,C,S,M,P,E,I,FFS
13	Agrochemicals – DGIN-03	Deccan Chemicals, Tuni	2019-20	PR,C,S,M,P,E,I,FFS
14	Agrochemicals- SEZ	Deccan Chemicals, Tuni	2019-20	P,S
15	Agrochemicals- Hydrogenator & Nitration Block	Deccan Chemicals, Tuni	2020-21	PR,C,S,M,P,E,I,FFS
16	Agrochemicals – CPTAP-Expansion	Deccan Chemicals, Goa	2020-21	PR,C,S,M,P,E,I,FFS
17	Agrochemicals- DG-AI-02	Deccan Chemicals, Goa	2020-21	PR,C,S,M,P,E,I,FFS



Value Added Engineering

# Food Sector

S No	Project	Client	Year	Scope of Services
1	Greenfield Confectionery	Lakshmi Food Products	2007-08	P & I
2	Greenfield Confectionery	Fruit & Nutty, Nigeria	2011-12	P,E,I & FFS
3	Powder Blending & Logistics	Symrise, Chennai	2012-14	C,S,P,E,FFS,CS,PM



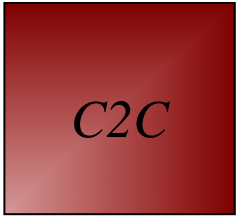
# Other Sectors

Value Added Engineering

S No	Project	Client	Year	Scope of Services
<b>Tyre</b>				
1	Greenfield Radial Tyre	Apollo Tyres, Sriperumbudur	2008-11	M,P,FFS,I,PA,CS
2	Expansion	Apollo Tyres, Sriperumbudur	2014-18	M,P,FFS,I,PA,CS
3	Expansion	Apollo Tyres, Sriperumbudur	2018-20	M,P,CS
4	Greenfield Tyre	Ralson Tyres Ludhiana	2019-20	M,P,I
<b>Oil &amp; Gas</b>				
1	LPG Bottling Expn.	Total Oil, Madurantakam	2010-11	C,S,PR,M,P,E,FFS & I
2	LPG Loading Bay	SRC	2010-11	PR,P,E,I

# LSTK Projects Executed

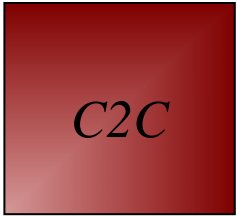
S No	Project	Client	Year	Value In INR Crores	Completion Time
1	Greenfield Building Chemicals Plant Kharagpur	BASF	2015-16	20.0	13 Months
2	Greenfield Building Chemicals Plant Naidupeta	BASF	2013-14	19.0	15 Months
3	Technology Lab + Power Upgrade	VALSPAR	2013-14	5.0	5 Months
4	Greenfield Paints Manufacturing Plant Chennai	SHALIMAR PAINTS	2016-17	6.5	12 Months
5	Relocation of Plant Chengelpet	BASF CATALYST	2016-17	7.0	15 Months
6	Pasumai Exp 1.0 MWC	BASF CATALYST	2019-20	33.0	15 Months
7	Pasumai Exp 2.0 MWC	BASF CATALYST	2019-20	6.0	12 Months
8	Pasumai Exp 3A MWC	BASF CATALYST	2019-20	5.88	6 Months



Value Added Engineering

# Engineering Software

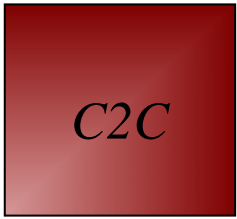
- AUTOCAD AEC 2019 for generation of intelligent PIDs , Plant 3D Modeling , MEP & Structural Steel Detailing
- STAADPRO V8i for structural analysis and design
- CADEM for mechanical design of process equipment
- MS PROJECTS 2016 for project scheduling & monitoring
- Wrench EDMS for Document & Change Management, Security for documents and Timesheet



Value Added Engineering

# Software

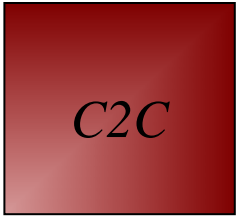
S No	Description	No of Licenses
01	Microsoft Windows Professional 10	85
02	Microsoft Office 2016	85
03	Microsoft Project Standard 2016	03
04	Microsoft Office 365	10
05	Microsoft Standard Server 2016	06
06	Microsoft Exchange Standard Server 2016	01
07	Microsoft SQL Server – Standard - 2017	04
08	Autodesk ACAD Plant AEC 2019	59
09	Autodesk ACAD Product Design Manufacturing Collection 2019	02
10	Autodesk ACAD LT 2019	10
11	Staad.Pro (v8i)	02
12	Acrobat X Pro	10
13	WinZip 13	10
14	Cadem PVD	01
15	Wrench EPC	01
16	Ceaser II (Stress Analysis)	On monthly rental when required
17	RCDC	01



Value Added Engineering

## Key Points about C2C

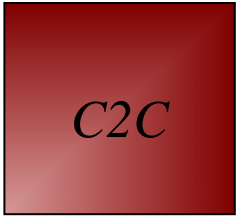
- **High level of detailing**
- **High degree of interaction with Client**
- **Repeat orders from Clients**
  - Asian Paints – 6 Projects
  - Asian PPG – 6 Projects
  - ICI (Now Akzo Nobel) – 4 Projects
  - Granules – 4 Projects
  - Natco – 3 Projects
  - Dr.Reddy's Laboratories – 5 Projects
  - BASF India - 4 Projects
  - Valspar India- 2 Projects
  - Deccan Fine Chemicals - 9 Projects
- **Latest intelligent software available for PID, 3D Plant Modeling & Instrumentation engineering detailing**



Value Added Engineering

# Non-Disclosure Agreement

Every employee of C2C is required to sign an NDA (Non-Disclosure Agreement) when they join the company. This document explains about the confidentiality of C2C property such as drawings, documents, technical information, materials, etc. All employees are advised to run through the document and clearly understand the content and then sign the duplicate copy and the same is filed as a record.



Value Added Engineering

## Contact Details

C2C Engineering Private Limited  
Plot 30 & 31, Padmavathy Nagar Extn  
Manapakkam Main Road, Kolapakkam  
Chennai – 600 122

Phone: +914435101253

Web: [www.c2cengineering.co.in](http://www.c2cengineering.co.in)

Contact: Raghavan Nambi, Chief Executive  
[raghavan@c2cengineering.co.in](mailto:raghavan@c2cengineering.co.in)  
Mob: 09444902884